



HydroSlide[®] Flow Regulator Type V

Regulating technology, tried and tested
for guaranteed constant discharge
No electrical power required

HydroSlide® Flow Regulator Type V

Regulating technology, tried and tested
for guaranteed constant discharges
No electrical power required

The Challenge

Modern hydraulic management concepts require throttling devices to be considered. The ideal is where the flow curve is perpendicular providing a constant discharge. Throttling controls are required for foul and surface water systems, for watercourses and river control. These regulating devices are required to provide precise discharge control throughout the regulating range.

The Solution

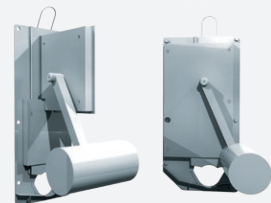
The orifice cross section is adjusted to maintain a constant discharge by a vertically operating shutter plate. The shutter plate is connected to a float arm which relates the water level to a control cam. The precision of the control cam design enables the flow to be regulated to an accuracy of $\pm 5\%$ from design point. All **HydroSlide® Flow Regulators** are commonly supplied without a 'First Flush' function (see technical documentation); however, a first flush function can be provided for use in foul sewers permitting the initial debris to pass downstream prior to regulating. In such cases, the **HydroSlide® Flow Regulator** can be adapted to any required setting. The regulators of the model series DR 200 or smaller have a double valve. A pull cable is standard for discharges less than 60 l/s to enable manual opening of the unit in case of blockages, although in foul sewers automatic opening operation is recommendable for discharges < 25 l/s. When manually opened, the **HydroSlide® Flow Regulator** opens the whole

The Advantages

- no external power source, no electricity
- simple, robust construction
- pull cable for manual opening from above ground (up to and incl. DR 250)
- control mechanism protected by housing
- no sole jump
- without initial flush
- wet installation avoids separate shaft
- favourable discharge cross-section during throttling
- adaptable for other discharge parameters by exchanging disc cam
- optional: VARIO function for Q_{ab} setting
- optional remote control

HydroSlide® model VN

Is characterised by its compact construction permitting installation through most access covers. Normally supplied without a 'first flush' function. The vertical shutter plate is specially shaped; the aperture is egg-shaped, giving a large opening with minimum risk of blockage. The VN model is intended for impounding heads of approx. $7 \times DN$. Available with float operation to the front or side (left or right).



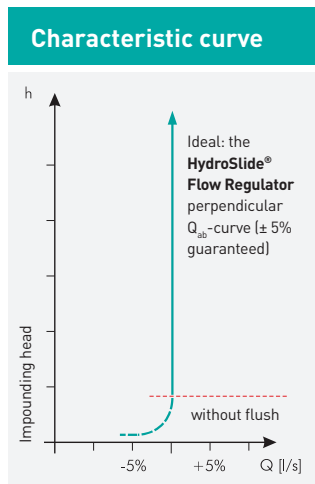
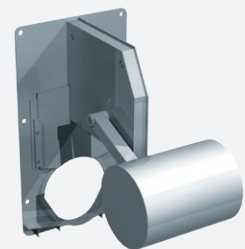
HydroSlide® model VS

Functions as VN model, designed for higher impounding heads from approx. $13.5 \times DN$. Available with float operation to the front or side (left or right).



HydroSlide® model VM

Functions as VN model, designed for minimum impounding heads of approx. $3.5 \times DN$. Installation where limited space is insufficient for the standard models (VN, VS). Available with front float operation only.



Selection

Discharge volume (l/s)	Nominal size (DR)
1 - 5	100
5 - 25	200/150
25 - 35	200
35 - 60	250
60 - 100	300
100 - 200	400
200 - 330	500
330 - 550	600
550 - 770	700
770 - 1080	800
1080 - 1450	900
1450 - 1880	1000
... - 5200	on request

① Installation in storm water
② Automatic operation recommended
③ With hand pulley

orifice to enable debris to pass through. All regulators are provided with a benching profiling guide. The **HydroSlide® Flow Regulator** models VN and VS are fitted with a shutter plate controlled by a float arm, which moves the plate vertically within the outlet orifice.

The entire control mechanism is fully protected from collecting dirt by a housing cover. Two hand pulleys enable the safe manual opening of the regulator unit's outlet from ground level in the case of blockage or if upstream flushing is required.